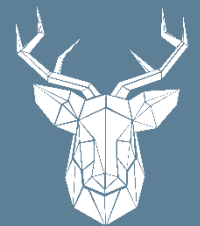




George Street
Ryde
£125,000



Lancasters

Spacious 2 Bedroom Ground Floor Apartment, with Basement storage. Situated in the popular location of George Street, the property is moments from the beaches and ferry links. Gas centrally heated. Grade II Listed.



2 Bedroom Ground Floor Apartment

Living Room 17' 10" x 12' (5.43m x 3.65m)

Through the private front door and into this open plan living space. Dual aspect with windows to the front and side.

Kitchen 19' 4" x 5' 8" (5.9m x 1.73m)

Fitted modern kitchen with integrated electric oven and hob, and space for fridge freezer, washing machine / dishwasher.

Bedroom 1 14' 9" x 9' 7" (4.49m x 2.92m)

Large double bedroom with window to the side.

Bedroom 2 10' 8" x 8' 6" (3.25m x 2.6m)

Double bedroom, currently set up as a home office and guest bedroom. Window to the side.

Bathroom

Fresh white bathroom. Bath with shower over, WC and basin.

Basement 26' 7" x 16' 9" (8.1m x 5.1m)

Brick vaulted ceilings. Reduced head height, currently uninhabitable storage space.

Occupancy

This property is currently tenanted generating a rental income of £675pcm. The current tenancy runs until 20th February 2024, after which time a new owner may review the rent or the tenants can vacate if vacant possession is required.

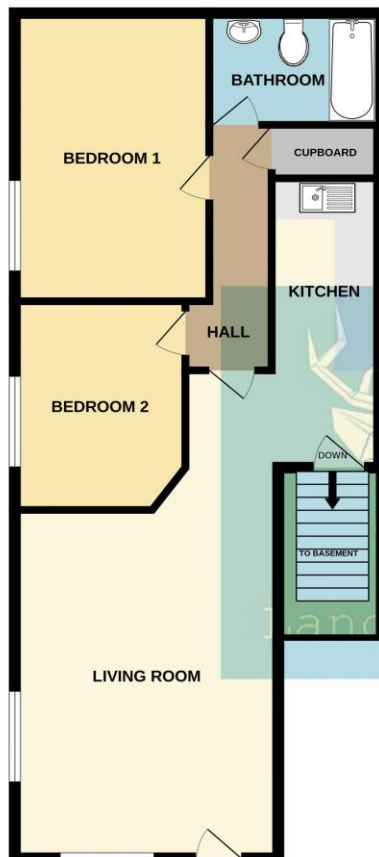
Tenure

Share of FREEHOLD

Lease: circa 110 years.

Service Charge: £100pcm.

Ground Rent: N/A



GROUND FLOOR
680 sq.ft. (63.2 sq.m.) approx.



BASEMENT
445 sq.ft. (41.3 sq.m.) approx.

Tenure: **Share of Freehold**

Council Tax Band: **A**

EPC Rating: **D**

Lancasters Estate Agents

65 High Street | Cowes | Isle of Wight | PO31 7RL

01983 209020

Homes@Lancasters.org